

15 February 2019

Dear Parents and Carers,

As we rapidly approach the end of another busy half-term I would like to take this opportunity to thank you for the support you have given both to your child and to the school.

It has been an extremely busy half-term, with many highlights ranging from the launch of the “Gumdrop” bins in and around Bewdley, our Year 11 students taking part in the latest instalment of the “Elevate” revision programme, students visiting Iceland, the wonderful atmosphere at our Rush Hour recital at All Saints Church, a Year 12 careers event at Malvern Showground and a number of students that are currently visiting Berlin.

I would like to remind parents and carers that this term ends on Friday 15th February at 3.20pm. School reopens on Monday 25th February to all year groups. Students are expected to be on-site for no later than 8.40am. The rest of my letter will focus on school uniform, in particular appropriate footwear and trousers, mental health and emotional support and the schools “non-negotiables”.



School Shoes and Trousers

We do appreciate that shoes can be an expensive item for parents to buy and we are therefore keen to ensure the correct version is purchased. Your child may tell you differently, but trainer-type shoes are not permitted, nor are canvas pumps, trainers or mules.

For girls, shoes should be flat or with a minimal heel, sensible, plain style, black and clean/polished please. Should your child attend school in footwear that is unacceptable, we will provide a pair for them use until they have acceptable shoes.

If for any medical reason your child needs to wear trainer-style shoes, you will need to supply evidence provided by a medical professional (i.e. GP or Consultant).

With regards to girls’ trousers and skirts, full length “Tailored Black School Trousers” are required. They must not be low rise, skinny fit lycra, tight fitting, denim/jean or jeggings. The trousers must not have external buckles, rivets, zips or logos. Skirts need to be knee length and pleated – straight skirts are not permitted.

Head Teacher Dave Hadley-Pryce BSc MSc FRSA

The Bewdley School, Stourport Road, Bewdley, Worcestershire, DY12 1BL

Telephone: 01299 403277

Email: office@bewdley.worcs.sch.uk - Web: www.bewdley.worcs.sch.uk

Those students who wear the incorrect uniform, will be expected to wear replacement uniform/footwear. Students will be challenged by all staff if they are wearing unacceptable uniform and parents will be informed and be required to rectify the issue.

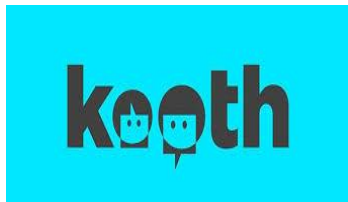
All of our uniform is available to order online or by telephone from Marks & Spencer at http://www.mandsyourschooluniform.com/staffordshire-worcestershire/the-bewdley-school/prodlist_ct5167.htm?order=1&size=24. Further details and information on our school uniform and breaches of school uniform can be found in our Behaviour Policy <https://www.bewdley.worcs.sch.uk/wp-content/uploads/2019/01/Bewdley-School-Behaviour-Policy-v10-January-2019.pdf>.

Please see the "Acceptable School Uniform Guidelines" handout at the end of this letter.

Mental Health and Emotional Support

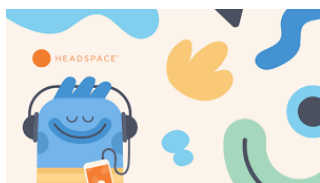
It is very important to us that your child enjoys their time at The Bewdley School, and that they feel safe and supported whilst they are here. There are school drop down events e.g. regular assemblies, The Bewdley Values during form time activities, and our PSHE programme, Managing Harm Workshops when we will discuss related issues. Your child can talk to a Student Support Manager, their Form Tutor or their Head of Year. Your child sees their form tutor every day, or they can choose to speak with a teacher they trust.

A great service available to children outside school is <https://kooth.com> This provides free, safe and anonymous online advisory support for young people and is open to use until 10pm.



Apps that can help your child?

If they are stressed you might consider downloading an app that might help them such as:



Headspace



Breathe



Smiling Mind

Head Teacher Dave Hadley-Pryce BSc MSc FRSA

The Bewdley School, Stourport Road, Bewdley, Worcestershire, DY12 1BL

Telephone: 01299 403277

Email: office@bewdley.worcs.sch.uk - Web: www.bewdley.worcs.sch.uk

Specialised advice and support available?



Ready to Learn

Our school motto “Learning for Life – Achievement for All” applies to both students and staff. We expect the school community to ensure they are **Ready, Respectful and Safe** by living the school values.



The focus for next half-term will be ensuring all students are “Prepared” and arrive to school “Ready to Learn”. We expect **all** students to adhere to the school’s “**non-negotiables**”:

- arrive to lesson on time
- complete all classwork to the best of their ability
- complete all homework
- bring and use their school planner every day
- wear the school uniform in full and with pride
- bring a fully equipped pencil case with the following equipment to every lesson – at least 2 black/blue pens, green pen, purple pen, pencils, eraser, pencil sharpener, calculator, ruler, highlighter, colouring pencils, scissors, glue stick, compass, protractor
- students to put their hands up to ask/answer questions

We thank you in advance for your support in ensuring your child arrives to school “Ready to Learn”. The school will hold lunchtime/afterschool detentions if students fail to meet these basic expectations.

Head Teacher Dave Hadley-Pryce BSc MSc FRSA

The Bewdley School, Stourport Road, Bewdley, Worcestershire, DY12 1BL

Telephone: 01299 403277

Email: office@bewdley.worcs.sch.uk - Web: www.bewdley.worcs.sch.uk

I would like to take this opportunity to wish you and your family a restful half term. As always, please do not hesitate to contact the school should you have any queries or questions.

Yours sincerely,

A handwritten signature in black ink, appearing to read 'D Hadley-Pryce', written in a cursive style.

Mr Hadley-Pryce – Head Teacher

Acceptable school uniform guidelines

Blazer [Boys]



Blazer [Girls]



Jumper



Polo Shirt [summer only]



School Tie

[Yrs 7, 8]



[Yrs 9, 10 & 11]



Trousers [Boys]



Trousers [Boys]



Plain White Shirt/Blouse



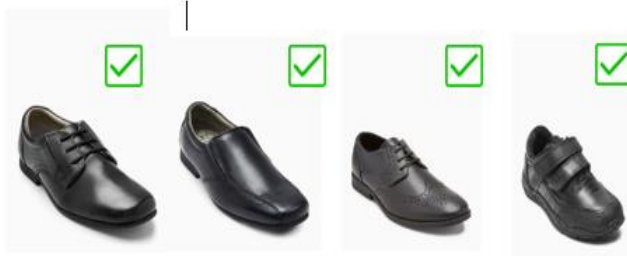
Pleated Skirt [Girls]



Trousers [Girls]



Examples of **acceptable** footwear [Boys]



Examples of **unacceptable** footwear:



Examples of **acceptable** footwear [Girls]

