



**THE BEWDLEY SCHOOL**

Learning for Life - Achievement for All

**TRUE  
EDUCATION**

**PARTNERSHIPS**

**Schools of Tomorrow – Student trip to China**

**22<sup>nd</sup> October – 31<sup>st</sup> October 2020**

**Briefing in the Activity Studio – Thursday 3<sup>rd</sup> October @ 5.30pm**



TRUE  
GOVERNMENT  
PARTNERSHIPS

TRUE  
EDUCATION  
PARTNERSHIPS

TRUE  
SPORT  
PARTNERSHIPS

TRUE  
BUSINESS  
PARTNERSHIPS

TRUE  
PARTNERSHIPS

## True Education Partnerships: *Who Are We?*

- True Education Partnerships are part of the True Partnerships Group.
- We offer life-changing immersive education experiences for schools in the UK and China.
- We have successfully set up and supported over 100 schools with active Sister School Partnerships.
- We work on a Government level across the UK and in China. We're official providers for the UK Government Ambassador Sister School programme.
- We provide the resources, training and support that participating schools need to ensure that partnerships are active, successful and beneficial to the whole school community.



TRUE  
GOVERNMENT  
PARTNERSHIPS

TRUE  
EDUCATION  
PARTNERSHIPS

TRUE  
SPORT  
PARTNERSHIPS

TRUE  
BUSINESS  
PARTNERSHIPS

TRUE  
PARTNERSHIPS

## Schools of Tomorrow: *Who Are We?*

### **SCHOOLS OF TOMORROW-REDEFINING OUTSTANDING**

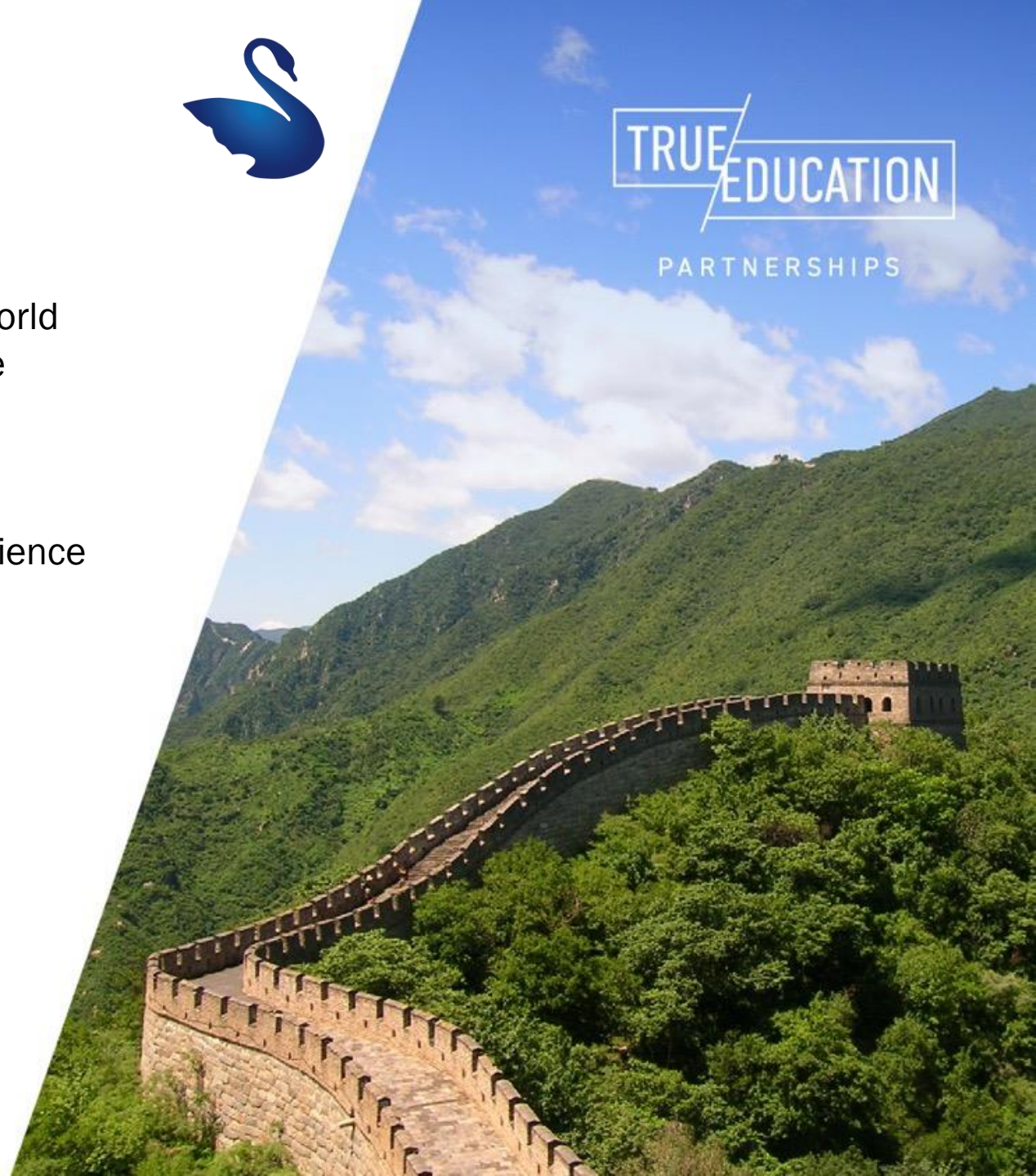
**We are a member-owned social enterprise open to all schools seeking values-led, research-informed change who share a broader understanding of school purpose and quality based on the Four Quadrant Framework, and commit to research and development, long-term partnership and peer support, in order to embed this deep into their practice.**

Working with True Education Partnerships, we entered the Sister School Partnership in 2018, sending Headteachers from some of our schools over to China to set up and initiate relationships with specially chosen schools in our sister city of Qingdao. The proposed student trip to China will help embed those relationships, promote cultural awareness, and lead to return visits where student relationships can be further strengthened.



## Why visit China?

- China is rapidly becoming the largest economy in the world
- It has a population of 1.35 billion (that's one fifth of the world's population)
- The “community of shared future for mankind” that emphasises mutual respect and cooperation
- Learn and practice Mandarin in a fully immersive experience
- Be an ambassador for your school and the UK
- Endless future opportunities: international studies and improve employability





# Why visit Qingdao?



Population: 9,046,200



Seaside city located in the southeast part of Shandong



May 4<sup>th</sup> Square: 'May Wind' sculpture



Zhan Bridge: originally built in 1891 as a naval pier



Mount Laoshan: famous for its marvellous mountainous scenery and coastal landscape



Small Qingdao Island: unspoiled scenery and 'beacon'





## Benefits to students

- Providing life changing, immersive experiences
- Trips inspire, equip and support them to succeed in life and learning
- Gives students pride in their own culture by being ambassadors of the school and the UK
- Increasing personal awareness and confidence
- Raising cultural awareness and highlighting diversity
- Increasing understanding of how interdependent countries and peoples are, both globally and locally
- Exposure to varied opportunities that enables focus and clarity on their future potential
- Provides life-long friendships with Chinese students



## What to expect?

- A full immersive experience itinerary
- Visit to a Chinese school
- Experience life as a Chinese student
- Create international friendships
- Valuable insight into the customs and traditions of China
- Try local cuisine and experience a new culture
- 2/3 days sightseeing at China's biggest tourist attractions
- The trip of a lifetime



TRUE  
EDUCATION

PARTNERSHIPS



# 10-day Itinerary

Date	Breakfast	Morning	Lunch	Afternoon	Dinner	Accommodation
22/10/20	/	Depart from London airport to Beijing	On plane	On plane	On plane	On plane
23/10/20	On plane	Pick up from Beijing airport	Local restaurant	Beijing sightseeing	Local restaurant	4 star hotel Beijing
24/10/20	At hotel	Beijing sightseeing	Local restaurant	Beijing sightseeing	Local restaurant	4 star hotel Beijing
25/10/20	At hotel	Beijing sightseeing	Local restaurant	Beijing sightseeing/transport Qingdao	Local restaurant	4 star hotel Qingdao
26/10/20	At hotel	Qingdao sightseeing	Local restaurant	Qingdao sightseeing	Local restaurant	4 star hotel Qingdao
27/10/20	At hotel	1 <sup>st</sup> school visit	School canteen	1 <sup>st</sup> school visit	Local restaurant	4 star hotel Qingdao
28/10/20	At hotel	2 <sup>nd</sup> school visit	School canteen	2 <sup>nd</sup> school visit	Local restaurant	4 star hotel Qingdao
29/10/20	At hotel	3 <sup>rd</sup> school visit	School canteen	3 <sup>rd</sup> school visit	Local restaurant	4 star hotel in Beijing
30/10/20	At hotel	Qingdao transport to Beijing	Local restaurant	Transport to Beijing airport to London	On plane	On plane
31/10/20	On plane	On plane	On plane	Arrival London airport	/	/





## Internal Deadlines

- iPayImpact will be launched at 7pm on Friday 4th October
- Deposit of £200 and consent by 8am on Wednesday 9<sup>th</sup> October
- Bursary applications by 8am on Mon 7th October
- Consents/applications should be handed in to reception

## The Company Payment schedule

Deposit of £200 by 11<sup>th</sup> October and then:

- 1<sup>st</sup> instalment of £500 - 13<sup>th</sup> January 2020
- 2<sup>nd</sup> instalment of £500 - 12<sup>th</sup> March 2020
- 3<sup>rd</sup> instalment of £424 - 1<sup>st</sup> July 2020

## Key questions

### When is the trip?

22<sup>nd</sup>-31<sup>st</sup> October 2020.

### How much does it cost?

£1624 per student based on 40+ students and drawn from 5 Schools of Tomorrow member schools

### Is there a deposit?

Yes. A deposit of £200 to secure a place.

### What does the cost include?

Flights, visas, accommodation, internal transport, all meals, sightseeing and translator/interpreters/guides.





## Key questions

### Is it safe to send my child?

True Education supply a thorough Risk Assessment Pack and there will be a member of TEP staff accompanying the group. We have been doing these trips for several years, working with local governments around China and areas in the UK. For an added layer of security, the Chinese Education Bureau are also overseeing the trips.

### What about the Visa process?

We will send you all the paperwork for you to fill and we will explain the Visa process closer to the time. There will be a preparation for China session before departure to answer any questions and ensure everyone is aware of what to expect.



TRUE  
EDUCATION  
PARTNERSHIPS





## What you need to take part

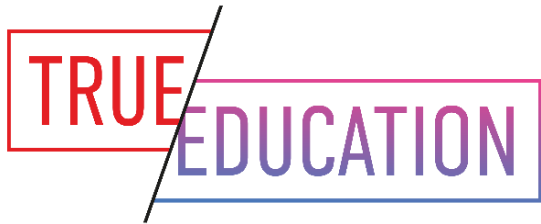
- **A Valid UK Passport:**
  - Check passports have at least 6 months left following dates of travel; you will need them for visa application in September
- **Visa:**
  - True Education Partnerships will help you to secure your visa

## Next steps...

- Take a registration form to fill in and confirm your request for a place and return with the deposit.
- Terms and conditions regarding cancellations and refunds attached.~







PARTNERSHIPS

Follow Us On

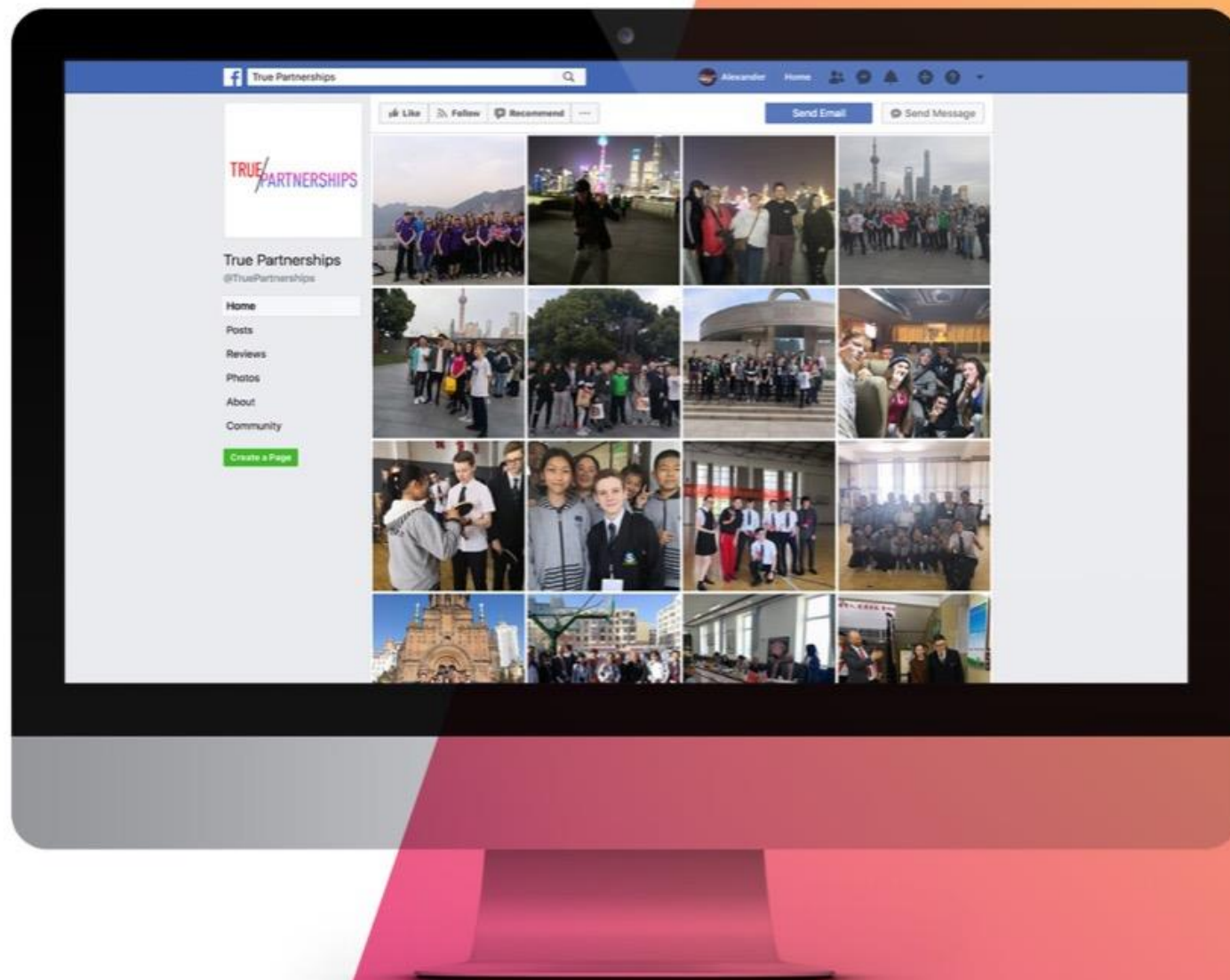
# Social Media

 /TrueEducationPartnerships

 @TrueEducation\_P

 @TrueEducationPartnerships

 @schoolsoftomor





TRUE  
EDUCATION

PARTNERSHIPS

# Any questions?

Contact Us:

[firststeps@trueeducationpartnerships.com](mailto:firststeps@trueeducationpartnerships.com)

Or call 0151 708 8695

Find Out More:

[TrueEducationPartnerships.com](http://TrueEducationPartnerships.com)