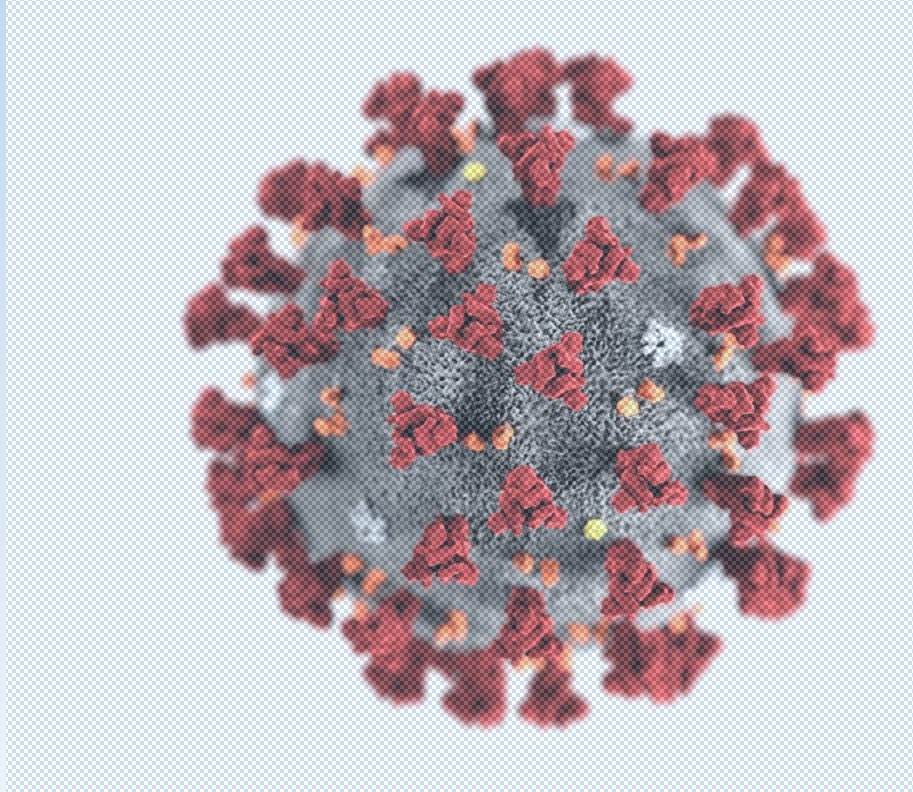


Welcome ALL Students – September 2020



Return from COVID-19



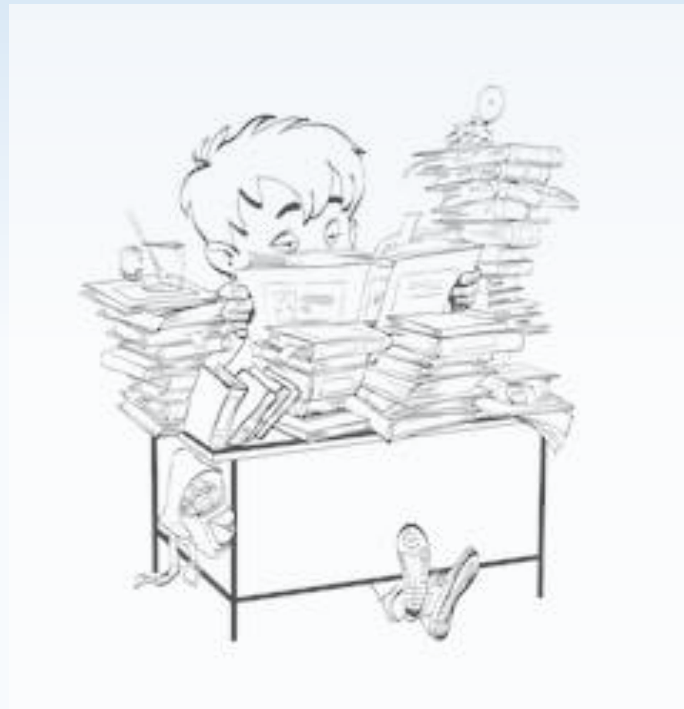


We know it has been hard...but you have done really well...You are a Bewdley School student so we know you can do this. We need you to:

- 1. To be kind**
- 2. To work hard**
- 3. To develop your whole self**
- 4. To catch up on lost learning**



Some of you have worked really hard...



Some of you haven't...

Ready,
Respectful &
Safe

Prepared



THE BEWDLEY SCHOOL

Learning for Life - Achievement for All

This is time to reset



This virus is real, it has killed a huge number of people. We have taken the following measures to ensure you and our community are safe!



School will feel different:



- You will stay in your year groups
- You will only mix with people in your year group during lunchtime
- You are not allowed to mix with other year groups whilst in school
- You will follow the timetable you are given
- You need to follow the one-way system at all times
- You must keep a social distance when walking around the school
- You must go to your designated area if you arrive to school before your allocated time

Hygiene is paramount!:



- You must wash and sanitise your hands regularly – upon entry to the school, before and after lunch, when you enter a classroom. Automatic hand sanitisers are positioned conveniently around the school and classrooms – Please use them!
- Wash your hands for a minimum of 20 seconds with soap and water
- You must wear a face covering during lesson change overs. Please ensure you follow the guidance on wearing a face covering

Cleaning:



- The school has been deep-cleaned throughout
- We have increased our cleaning schedules
- Touch points [door handles etc] around school will be cleaned regularly
- Classrooms cleaned when and where necessary
- The main hall will be cleaned between lunch sittings
- Classroom resources cleaned between year groups
- Toilets will be cleaned more regularly during the school day

How to wear a face covering:

A face covering should:

- cover your nose and mouth while allowing you to breathe comfortably
- fit comfortably but securely against the side of the face
- be secured to the head with ties or ear loops
- unless disposable, it should be able to be washed with other items of laundry according to fabric washing instructions and dried without causing the face covering to be damaged

When wearing a face covering you should:

- wash your hands thoroughly with soap and water for 20 seconds or use hand sanitiser before putting a face covering on
- avoid wearing on your neck or forehead
- avoid touching the part of the face covering in contact with your mouth and nose, as it could be contaminated with the virus

When removing a face covering:

- wash your hands thoroughly with soap and water for 20 seconds or use hand sanitiser before removing
- only handle the straps, ties or clips
- do not give it to someone else to use
- if single-use, dispose of it carefully in a residual waste bin and do not recycle
- if reusable, wash it in line with manufacturer's instructions at the highest temperature appropriate for the fabric
- wash your hands thoroughly with soap and water for 20 seconds or use hand sanitiser once removed



Start of the school day:



- **Be on time to school!**
- Coming to school on time more important than ever
- We must avoid cross-contamination with other year groups
- We want to keep you safe
- If you arrive early to school you must stay in your designated zone
- If you are late you must sign in quickly and go straight to where you should be

Designated zones for students if you arrive early to school:



Year 7 – Gym

Year 8 – Upper Playground [near B Block]

Year 9 – Tennis Courts

Year 10 – Upper Playground [towards the field]

Year 11 – Outdoor seating area near the ‘Pod’

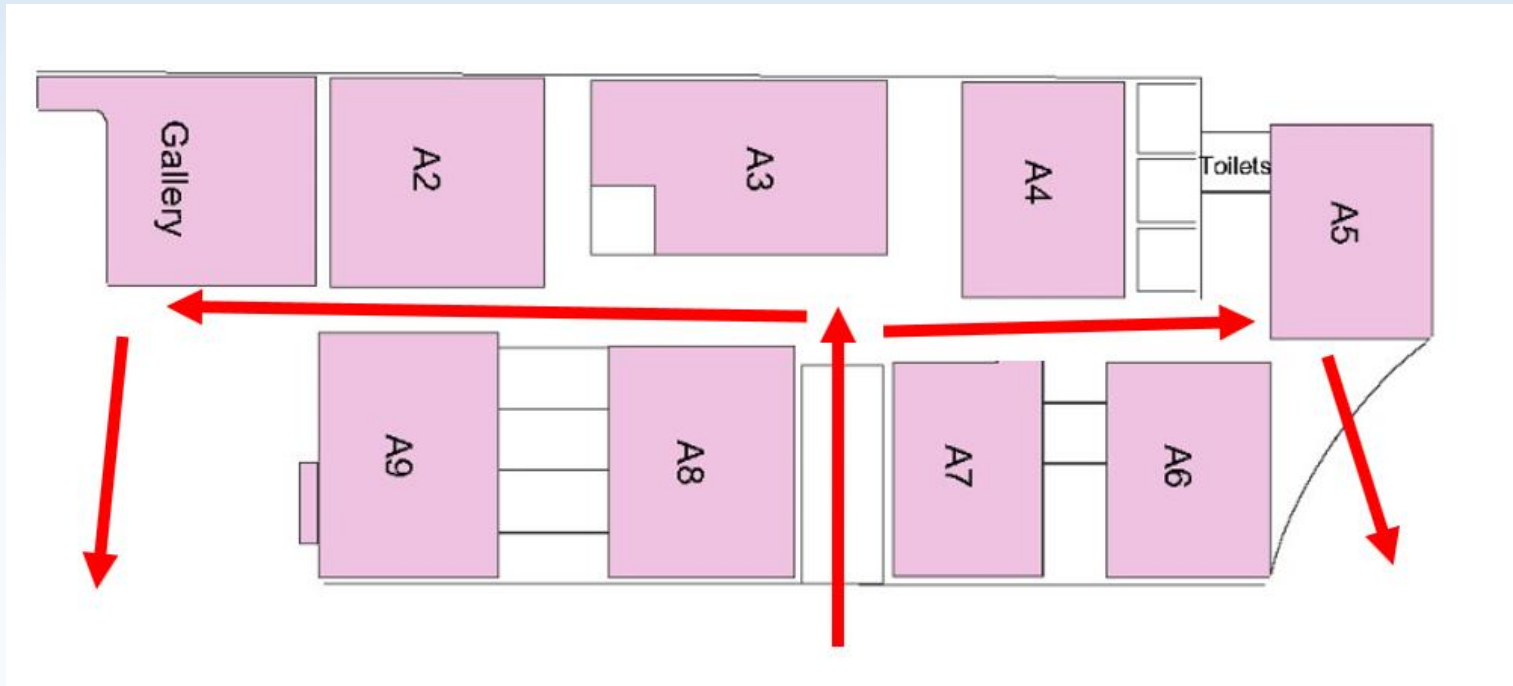
One way System

COVID-19 Systems in Place:

- One-way flow around the school – All buildings have a one way flow that **all** students, staff and visitors must follow



A Block

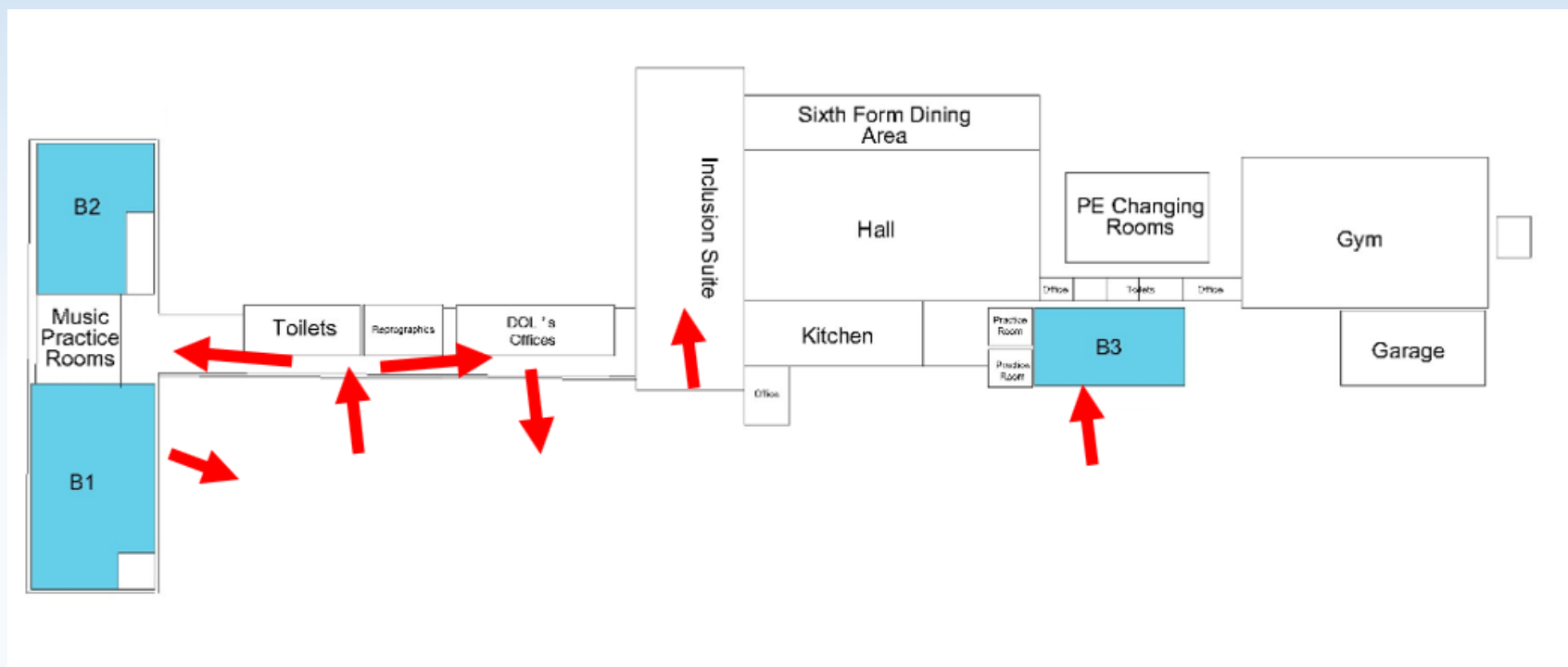


One way System

COVID-19 Systems in Place:



B Block

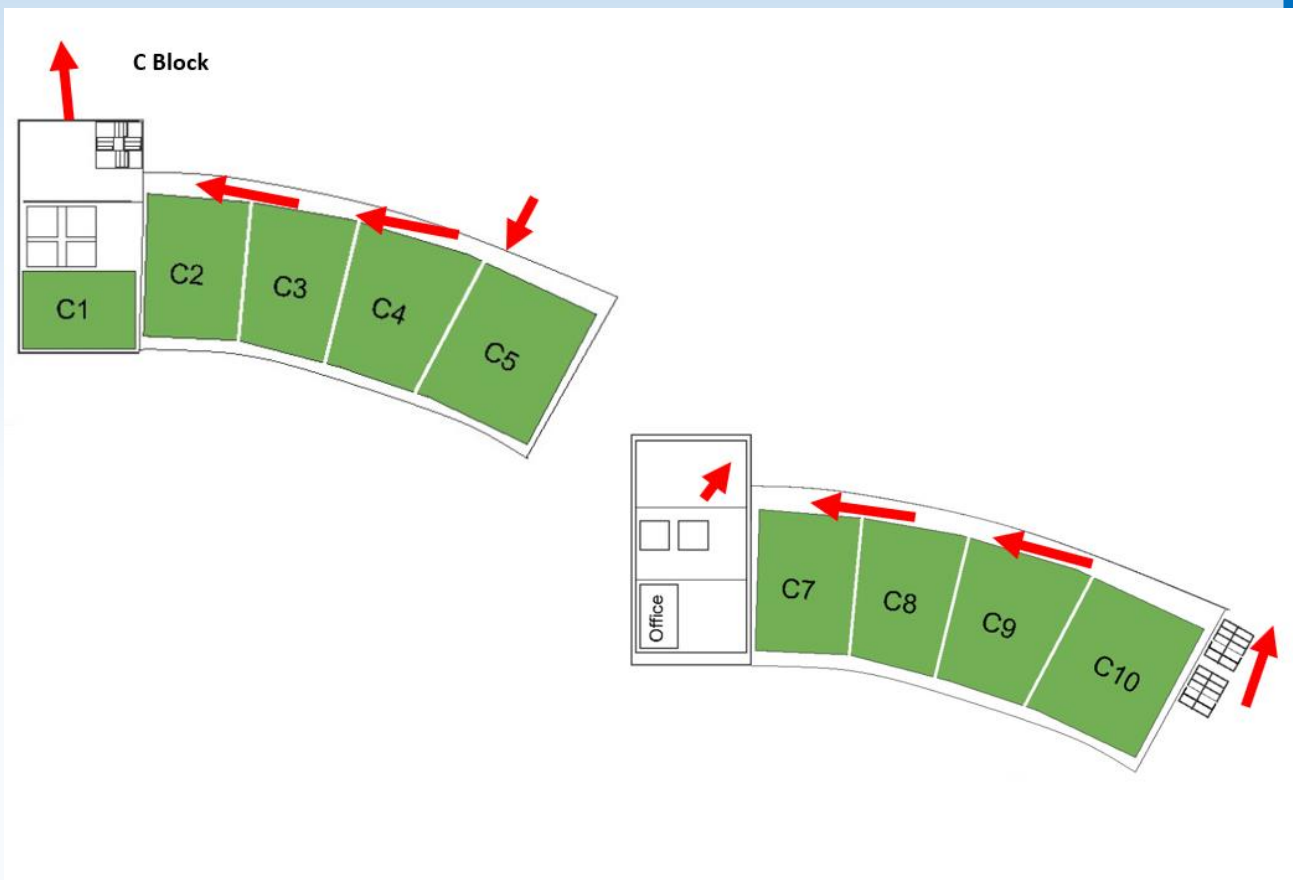


One way System

COVID-19 Systems in Place:



C Block

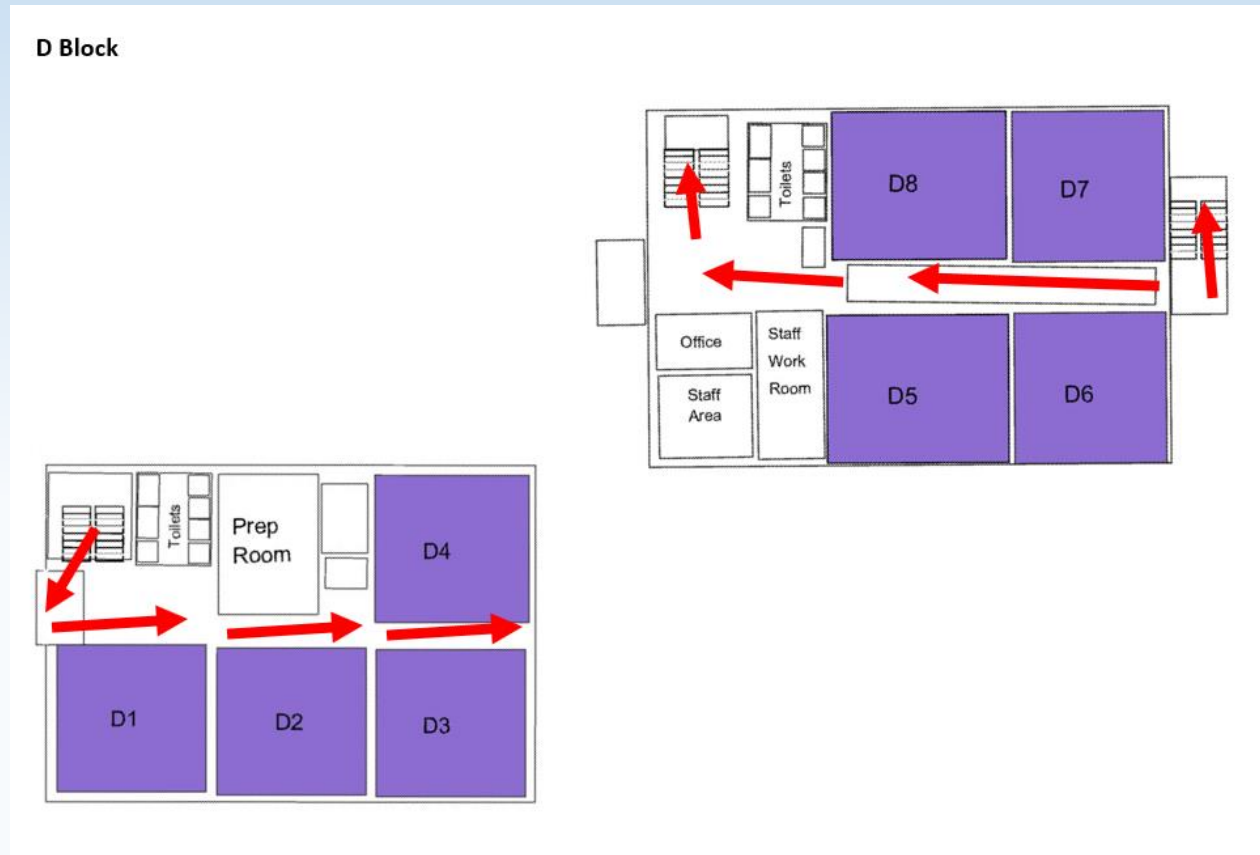


One way System

COVID-19 Systems in Place:



D Block



One way System

COVID-19 Systems in Place:



E Block



Break & Lunchtime:



- Remember! There is no break time
- Lunch will be on a rotational basis – please ask your form tutor for details or see your planner
- Food in the canteen will be focused on a ‘Grab & Go’ basis with a very limited hot food menu – we recommend you bring a packed lunch if you can
- Food must only be consumed in the canteen - You will have approximately 20 minutes in the canteen to eat your lunch
- The rest of lunchtime will be spent outside
- No ball games will be permitted on the school site during lunchtime and please do not run around
- You may wear a face covering at lunchtime if you feel comfortable – please follow the guidelines on this

End of the school day:



- **You must leave the school premises quickly at the end of the school day**
- If waiting for public/private transport, please wait in single file on the Tennis Courts [this is marked out by Year groups]
- You must follow instructions at all times and leave straight away to help reduce crowds.
- You must not congregate onsite or outside of the school, stick to safe social distancing rules.
- Go straight home for the safety of yourself and others
- You will not be able to play on the school grounds after school.

School uniform and PE kit:



- You **must wear your full school uniform**, at all times. Including your blazer, tie and appropriate shoes
- Ensure you **clean it** regularly.
- You will **need your PE kit**, you will be getting changed for PE. You will still do PE
- If you choose to wear a **mask**, be aware that this must be appropriate for school, inappropriate ones with symbols, patterns or pictures on will be collected by staff and given back to you at the end of the day.

You are always a Bewdley School Student.

Remember our Values and what we expect!



Why are we making all these changes?



- To keep the whole school community safe!
- Our new rules have been carefully thought out, using government guidance
- Taking these measures and the other measures that the government recommend will help to control the virus and keep us all safe
- Although the government believe that children are less likely to be severely effected by the virus we still need to take this action to protect our loved ones - our older relatives and family and friends who may be in vulnerable groups, such as those who already have health problems
- We also need to keep numbers being admitted to hospital low so that our NHS can cope

Maintain social distance:



- Stick to safe social distancing rules at all times. You know this, and it is for the safety of you and other people.
- Ideally 2 metres!
- Please think and be sensible.
- If not, the usual sanctions will apply. If it continues we may have to send you home and you may not be allowed back on site.
- **BE SAFE**



Appropriate behaviour:

- If we have any instances of students being silly with coughing and sneezing, we will deal with this immediately and severely.
- **IT IS NOT FUNNY**
- Depending on the seriousness of the incident, a **permanent exclusion** maybe necessary.
- **THIS IS DANGEROUS, AND YOU MUST NOT DO IT.**



Increased hygiene:

- Sanitising dispensers are available in each classroom.
- You must use these at key points throughout the morning
- It is expected that if you cough or sneeze you will use tissues to 'catch it, bin it, kill it.' Tissues must be disposed of in the bin
- You must then sanitise your hands using the sanitiser



CATCH IT

Germs spread easily. Always carry tissues and use them to catch your cough or sneeze.



BIN IT

Germs can live for several hours on tissues. Dispose of your tissue as soon as possible.




KILL IT


Hands can transfer germs to every surface you touch. Clean your hands as soon as possible.



Remember any symptoms:



 HM Government



CORONAVIRUS


Have you been to an affected place
in the last 14 days


or


had contact with somebody
with Coronavirus,

and

do you have any of these symptoms?


Cough


Fever


Shortness of
breath

If yes, to protect yourself and others please
go home and search 'nhs coronavirus'
for advice and to access the 111 online
coronavirus service or call NHS 111.

Do not enter this building

Find out more at nhs.uk/coronavirus

- ▶ If you have any symptoms you must inform an adult immediately
- ▶ **Go to Main Reception**
- ▶ We may have to send you home
- ▶ This is about everybody's safety including yours.

In the classroom:

- ▶ You must sanitise your hands on entry to the classroom.
- ▶ You must sit according to the seating plan.
- ▶ You must not share your equipment with anyone.
- ▶ You must not share anything else such as food, drink, makeup or clothing.
- ▶ You must not get off your seat, and move around the room.
- ▶ You must all sit facing the front of the room.



Toilets:

- ▶ Please try and use the toilets at Lunchtime. Ask your teacher if you need the toilet outside of this time.
- ▶ You must wait in line until it is safe for you to enter the toilet area, keeping a safe social distance away from any one else
- ▶ You must wash your hands for at least 20 seconds when you have been to the toilet
- ▶ You must not congregate around the toilet area
- ▶ Use hand sanitiser



What can you do?



- Think about your behaviour and conduct when you are in. We know this is a very different way of working for all of you (and us)
- **BE SAFE!** This is important, this disease is dangerous, it kills people.
- If you have any worries or concerns speak to an adult at school, every adult at school has had training to support you.
- **Don't be a bystander!** This is the time to step up and protect our school community

Behaviour recovery



- The Behaviour Recovery room has been moved to the school staff room in 'B' Block. This room is big enough to have students from different year groups in it, whilst maintaining a safe social distance from each other.
- Your Heads of Year are now located in B Block in a multi-use office



We will adapt and make this work



Together we will be stronger