

THE BEWDLEY SCHOOL

WE FLY WITH OUR OWN WINGS
ALIS VOLAMUS PROPRIIS



'PUPILS FEEL
SAFE AND HAPPY'

OFSTED
2019

SCHOOL PROSPECTUS



WELCOME WHO WE ARE



"Our students are happy, confident and kind, with a genuine love of learning and optimism for the future."

Dave Hadley-Pryce, Head Teacher

The Bewdley School has its roots in Bewdley High School, built in 1956 on our beautiful 22 acre site on the banks of the Severn. As the town's only secondary school we have close working partnerships with our community, striving to be at its heart.

Values of equality, success through effort, and respect shine through our daily schooling. Our students are courteous and well-disciplined, understanding that anything they learn can be improved on with hard work.

Our broad curriculum has been structured to stretch and challenge our students. Analytical skills and knowledge balance with creativity and craft. All are offered progressive opportunities for genuine choice, allowing personalisation for each child.

The school is supported by The Bewdley School Foundation, a charitable company partnering Bewdley Festival and Bewdley Civic Society, and other active members of our community. This will develop our estate for the benefit of both school and town.

RELATIONSHIPS BETWEEN
STAFF AND STUDENTS ARE
A CLEAR STRENGTH OF OUR
SCHOOL, FORMING THE
FOUNDATIONS FOR ALL
THAT WE DO.



Students have a clear personal support infrastructure, through tutor to Head of Year and the wider pastoral team. Expectations are clear, based on respect for others and for the school, with poor behaviour being rare.

Our six new classes each year are divided across our three houses, Baldwin, Ribbesford and Severn. Our House System is core to our students' sense of belonging in the school, providing an intimate connection with our historic town.

We have developed a holistic approach to personal development, with all key elements of personal education embedded across the curriculum. This ensures students have clear and well-structured guidance as they grow and mature.

Our students are kind and respectful, being tolerant of difference in an atmosphere where all can learn and flourish. Social development beyond school is supported by our reopening the Youth Centre with our partners, The William Mills Foundation.



HOWEVER

WE HAVE STRONG
RELATIONSHIPS WITH
PARTNER PRIMARY
SCHOOLS, ENSURING
THAT THE MOVE TO
SECONDARY SCHOOL IS
WELL SUPPORTED AND
SMOOTH.

"My experience of joining Year 7 was quite disrupted due to COVID-19, but the warmth and friendliness of all the staff made me feel at home straight away."

STUDENT VOICE



"Our strong pastoral team ensure that all of our students can thrive and prosper in a kind and nurturing environment allowing them to achieve their full potential."

HEAD OF YEAR 7

This is a potentially difficult time for parents, who are often used to dealing with a single teacher. Our Head of Year and specialist tutor team are our hub for communications, ensuring parents have a single point of contact.

Our support for this transition begins at our open events. Our social media gives regular updates, with our website offering deeper insights into school life. Parents are most welcome to make an appointment to visit and seek advice.

The induction process begins once places are allocated. Our induction day and information evening are a great opportunity to get to know us and gather essential information about our school.

Once your child has started and is studying a dozen subjects, you may contact their pastoral support team with any concerns. Consultation evenings and regular reports offer more detailed updates, with agreed strategies to support learning.



LEARNING AT BEWDLEY

LEARNING IS PURPOSEFUL
AND PRODUCTIVE, WITH AN
INCREDIBLY DIVERSE RANGE
OF SUBJECTS AND
EXPERIENCES OFFERED.

Our well-balanced curriculum ensures breadth and opportunity is maintained throughout the school. There is equal emphasis on analytical and creative subjects, and the full spectrum in between.

Subjects are each uniquely organised, with mixed ability tutor groups forming a base, while some subjects have sets or bands. As students specialise, group numbers drop, with 'creative options' chosen towards the end of year eight.

This enables students to practise choosing subjects prior to GCSE options, from a mix of 'creative subjects' and new subjects they have yet to study. This includes business, classics, economics, psychology and sociology, with others yet to come.

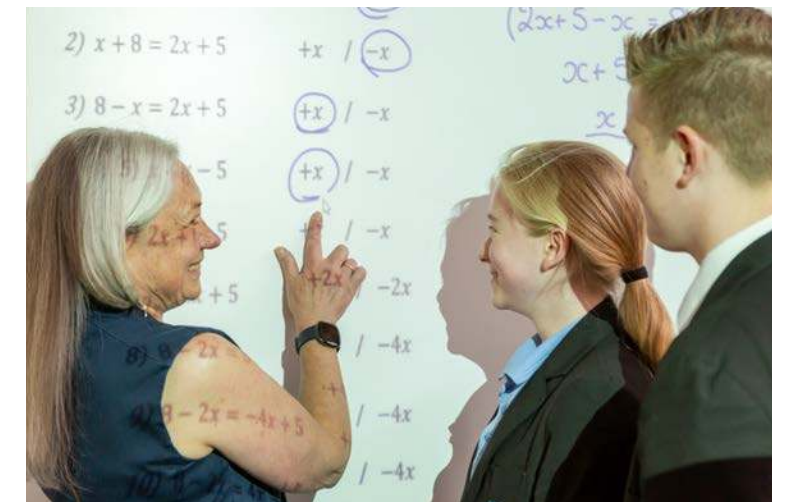
Options are chosen half-way through year nine, meaning two and a half years of GCSE study. Success here is supported by the study of English and maths every day, with science, PE and four essentially free options.



S
S
E
C
O
N
S

"The strategy of the governing body is to create a positive learning environment to develop independent, resilient and ambitious learners who respect the needs of others and the environment."

CHAIR OF THE GOVERNING BODY





SHAPING YOUR FUTURE

FIND THE SPARK

Our curriculum design is based entirely around supporting progression and choice, with wide ranging co-curricular opportunities enabling decision making.

We work hard to ensure that every child has a personalised experience during their time with us. Central to our educational philosophy, is to 'find the spark' in every child, to sustain and enrich them throughout their life.

Our flexible and broad options system ensures choice and diversity, with students who need additional challenge or support accessing targeted intervention. Our school is inclusive, with equality of opportunity underpinning our values.

Individual careers support is key, with wide ranging employer links and community action developing confidence and resilience. This guidance runs through to our Sixth Form through our professional pathways programme.

Students from Bewdley progress along many pathways, through apprenticeships, employment and university study. Crafted individual planning ensures each student is ready to step with confidence into the wider world.

ENRICHING LEARNING

THE WIDER OPPORTUNITIES A SCHOOL OFFERS IS WHEN THE CURRICULUM TRULY COMES TO LIFE, AND LASTING MEMORIES AND FRIENDSHIPS ARE FORGED.

The importance of our co-curricular offer is reflected in its richness and diversity. From sport, music, the arts, the great outdoors, our diverse range of clubs to our varied international programme, there is something to tempt every child.

Our musicians perform locally alongside professional acts, with art and photography supported by our community. Students excel in team and individual sports, and we are beginning to exploit the potential of our fabulous site.

Outdoor education is deeply embedded, including outdoor residentials and DofE bronze, silver and gold expeditions. Our newly formed Discovery Society charity is building on this, with for example, an expedition to Dominica in the Caribbean.

This international focus is key to our philosophy, with the school having hosed a global happiness conference attended by ten nationalities. Trips to France, Iceland, Italy, Spain and USA, also help to broaden our cultural understanding.



'Colours of Nature'
ROTARY YOUNG PHOTOGRAPHY COMPETITION - YEAR 8 ENTRY



"I really enjoyed being a young leader at a cycling festival helping the younger school years."

STUDENT VOICE



"I feel both supported and challenged by my teachers and classmates, the perfect environment for success."

STUDENT VOICE YEAR 12

WE HAVE DESIGNED OUR EDUCATION AS A SEVEN-YEAR EXPERIENCE, WITH WIDE RANGING OPPORTUNITIES OFFERED IN OUR SIXTH FORM.

Britain is unusual in assessing young people at sixteen, with eighteen being 'graduation' time for many countries. Our Sixth Form is developing on this basis, to offer as wide a range of subjects and opportunities as possible.

Recently, computer science, classics, criminology, politics and sociology have all been added to our offer, with geology under consideration. We are also planning to offer technical (T) levels in subjects such as catering and healthcare science.

The result has been an ongoing expansion of our Sixth Form, facilitated by our refurbished Sixth Form block and Café. One of the key aims of our Foundation is to support the development of new Sixth Form facilities.

Our Sixth Form team has developed a comprehensive support infrastructure, with links to many universities and employers. Students benefit from daily tutor support and bespoke enrichment, which you can read about in our Sixth Form prospectus.

MOVING ON



The Bewdley School

Stourport Road
Bewdley
Worcestershire
DY12 1BL

Tel:

01299 403277

Email:

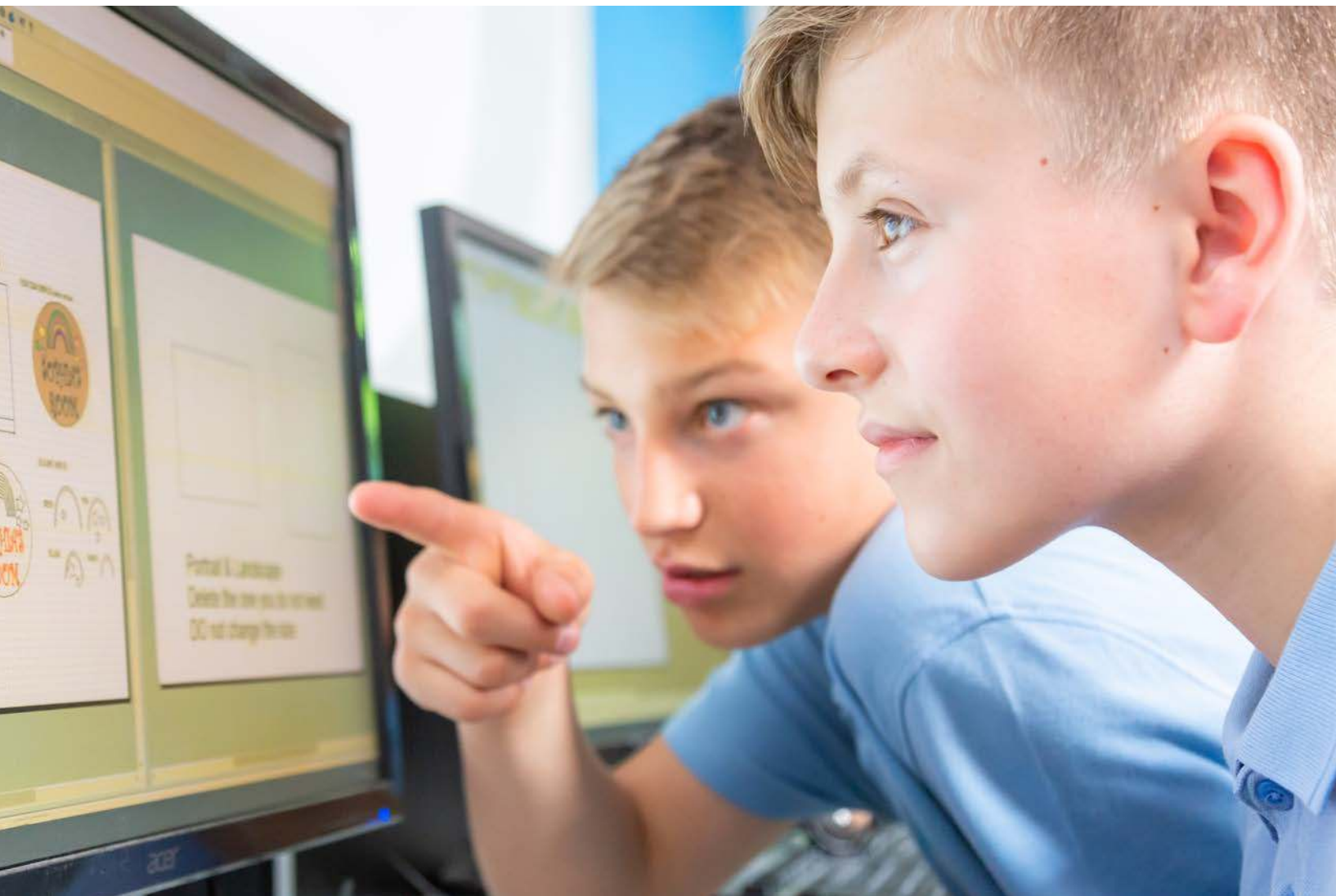
office@bewdley.worcs.sch.uk

Web:

www.bewdley.worcs.sch.uk

Admissions:

www.worcestershire.gov.uk



THE BEWDLEY SCHOOL FOUNDATION

Alis volamus propriis

