

ACADEMIC SUCCESS

---

# **BEWDLEY SIXTH FORM**

We fly with our own wings









# JOIN OUR COMMUNITY

Bewdley Sixth Form is a rare entity in today's education system, in that it encourages striving for academic excellence whilst recognising that at the same time, education is more stressful than it has ever been and students need high quality personalised support. We have a progressive and forward looking approach which means that you will get the support that you need, to go wherever your ambitions take you.

Our Young Mayor and Deputy who sit on Bewdley Town Council, and our growing international links, are a hallmark of our extended curriculum. Alongside our growing links with local businesses and the universities sector, this means a rich and varied range of opportunities for you, whatever your interests might be.

There is an ongoing review of our Sixth Form curriculum offer, to meet the ever changing needs of our community. We have recently introduced A levels in Classics, Computer Science and Sociology, and we are always willing to consider offering new subjects. If you have other interests outside our current offer, come to see us and let us know.

Developing our already excellent Sixth Form is a high priority for us as a school, as demonstrated by our newly refurbished specialist Sixth Form facilities, and I welcome you to come and see us to discuss your needs and ambitions.

Dave Hadley-Pryce  
Head Teacher

YOUR  
PATHWAY

## YOUR POST-16 JOURNEY & SIXTH FORM WELCOME

Bewdley Sixth Form has the highest aspirations for all our students. We are committed to providing a unique and quality driven educational experience. All applicants complete an online application, found on our website.

### YOUR POST-16 JOURNEY

Bewdley Sixth Form is committed to providing opportunities which enable students to gain experience of their chosen career paths. Our careers guidance programme is built into the heart of our pastoral support curriculum.

All students will receive one-to-one advice, have access to university subject Taster Day courses, in-house subject workshops (delivered by Universities or industry partners), a 'Next Steps Conference' day and will attend a variety of national and 'on site' careers fairs.

In addition, we also have a selection of career pathways. These have been specifically designed to help students gain vital experience in extremely competitive sectors. Students have access to industry days, guest speakers and have the opportunity to complete work experience.



ACADEMIC SUCCESS



I MADE THE RIGHT CHOICE TO STUDY  
AT **BEWDLEY SIXTH FORM**

Now, I'm studying History and Politics at  
the University of Cardiff



### THE CREATIVE ARTS PATHWAY

Design the next big thing using creative arts. Meet with experts from DRPG, hear from industry experts and engage in work experience in the sector.



### THE ENGINEERING PATHWAY

Help shape the world around you with our engineering pathway. Meet with apprenticeship providers and local employers, hear from industry experts and attend virtual engineering events.



### THE MEDICAL PATHWAY

Equip yourself for entering into the medical profession. Participate in scientific research to complete a Gold Crest Award, hear from medical professionals and attend work experience.

**COMMITTED TO  
PROVIDING OPPORTUNITIES**



# **CELEBRATE SUCCESS** A LEVEL PHOTOGRAPHY

YEAR 13 COURSEWORK



# CREATE A WIDER NETWORK BEYOND ACADEMIC STUDY

Being a member of Bewdley Sixth Form is about much more than just completing Level 3 courses, it is about taking every opportunity you can to develop the key skills necessary for success in any sphere. Therefore, we offer an extensive range of both super and extra-curricular activities.

An extra curricular activity helps students to learn about themselves: their personal qualities, create a wider network beyond academic study and apply key skills within a range of social settings. These options are open to all Sixth Formers regardless of their chosen Level 3 options.

- ELEVATE SESSIONS
- VOLUNTEER AND SKILLS SHOW
- UCAS FAIR

## EXTRA CURRICULAR

- YOUNG ENTERPRISE
- GOLD DUKE OF EDINBURGH
- OVERSEAS TRIPS
- ADVENTURE DAYS
- SUPPORT WORK EXPERIENCE/VOLUNTEERING
- FREE FIRST AID COURSES
- MOCK INTERVIEWS
- CHARITY WORK
- MUSICAL SHOWCASES
- PHOTOGRAPHY COMPETITIONS AND EXHIBITIONS



GOLD CREST AWARD



INDUSTRY WORKSHOPS



LECTURE VISITS TO UNIVERSITIES



UNIVERSITY SUBJECT TASTER DAYS

A SUPER-CURRICULAR ACTIVITY ENHANCES YOUR  
REGULAR SUBJECT CURRICULUM

## SUPER-CURRICULAR

These opportunities enable students to study beyond their Level 3 curriculum and help develop a sense of academic curiosity and independent learning skills which drives their motivation and enriches their education. These options are open to all Sixth Formers within their chosen Level 3 options.

EXTENDED PROJECT QUALIFICATION



BESPOKE FREE ONLINE COURSES



SENIOR MATHS CHALLENGE



OPERATION WALLACEA







# PASTORAL SUPPORT

## BESPOKE ACADEMIC DEVELOPMENT SCHEME

As a Sixth Form we place a significant emphasis on supporting students to adapt to the demands of post-16 study as quickly as possible.

### WE HAVE A BESPOKE ACADEMIC DEVELOPMENT SCHEME EMBEDDED IN OUR 'WAY AHEAD' PROGRAMME.

As a part of this programme all students are supported in developing vital skills including:

- accurate note taking
- extended writing tips for exams
- successful independent study plans
- time management strategies
- effective revision techniques

All students are encouraged to take part in organised philosophical discussions and debates which centre on global current affairs. In addition to the academic support programme, a variety of other support is offered to help ensure our students leave as well-rounded individuals ready to make the next step in their lives.

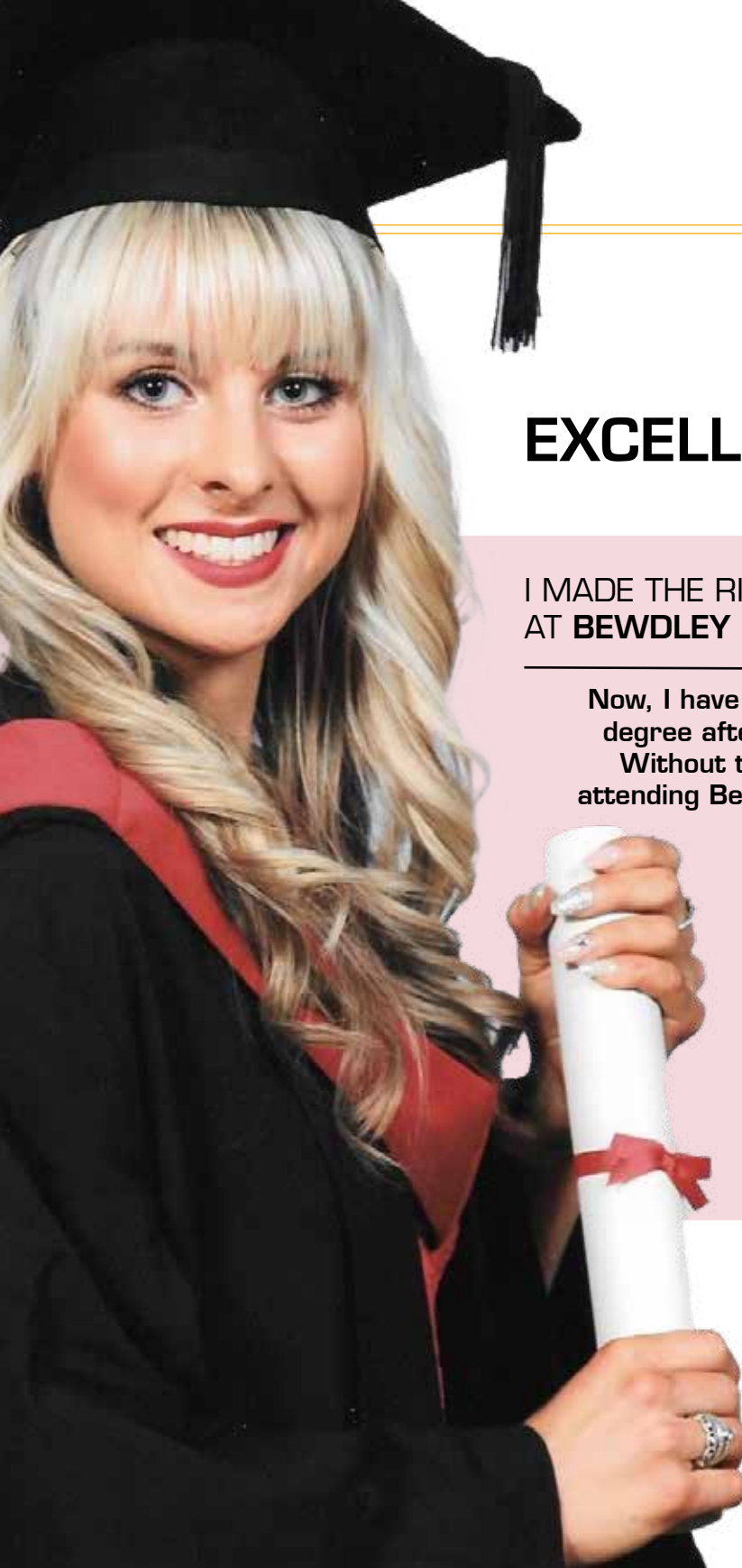
Our pastoral system ensures academic support is provided at the earliest opportunity. Students' attendance, punctuality and overall attitude to study are monitored and reported on to complement the consultation evening in both Years 12 and 13. A major focus of the work we complete, as part of both our pastoral and academic support, is to nurture the independent student who we know will have the skills to be successful at Sixth Form and beyond.

### WE REGARD SIXTH FORM AS A THREE-WAY PARTNERSHIP BETWEEN STUDENTS, STAFF AND HOME.

We communicate regularly with parents and encourage an open dialogue to pre-empt any significant issues before they arise.

All of this leads to students accessing their ideal next step.





## EXCELLENCE

I MADE THE RIGHT CHOICE TO STUDY  
AT **BEWDLEY SIXTH FORM**

Now, I have graduated with a first class  
degree after studying Bachelor of Law.  
Without the foundations I received by  
attending Bewdley Sixth Form, I wouldn't  
be where I am today.



SCAN TO READ MY JOURNEY

## SOME OF OUR RECENT STUDENTS HAVE PROGRESSED TO:



**AEROSPACE ENGINEERING**  
University of Leicester

**ARCHAEOLOGY**  
University of Cambridge

**ARCHITECTURE**  
Birmingham City University

**AUDIO & MUSIC TECHNOLOGY**  
UWE Bristol

**BIOMEDICAL SCIENCE**  
University of Warwick

**BROADCAST PRODUCTION**  
Queen's University Belfast

**CREATIVE WRITING**  
University of Winchester

**ENVIRONMENTAL SCIENCE**  
Keele University

**HISTORY AND POLITICS**  
University of Cardiff

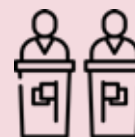
**INTERIOR DESIGN**  
De Montford (DMU)

**MECHANICAL ENGINEERING**  
University of Birmingham

**PRIMARY TEACHING**  
University of Worcester

**PSYCHOLOGY**  
University of Liverpool

**ROBOTICS AND  
ARTIFICIAL INTELLIGENCE**  
University of Aberystwyth











BUILD YOUR FUTURE WITH US





# ENTRY REQUIREMENTS

## MEET THE ENTRY REQUIREMENTS FOR EACH OF YOUR THREE SUBJECTS

We view it to be a crucial role of the Sixth Form Team to ensure students are registered onto courses that both match their ability and future career goals. Students will select three subjects that they will study over a two year course with all formal examinations taken at the end of Year 13.

We have generic minimum entry requirements that all students must meet, and additional requirements for each individual subject they wish to study.

### Entry Requirements:

- Meet the entry requirements for each of your three subjects
- Gain at least a grade 5 in 5 or more subjects.
- Show evidence of excellent attendance, motivation and attitude.



## APPLYING TO BEWDLEY SIXTH FORM

All applicants complete an online application, found on our website.

Following a student's application an interview process will be completed. During these interviews we aim to assess students' suitability for joining Bewdley Sixth Form. We take into consideration students academic profile, students' attendance and attitude to learning. Our interview process is also designed to support students in selecting the most appropriate subjects that match students' future career aspirations. If successful, students will be made an individual offer based on the subjects students wish to study.

To help transition successfully to Bewdley Sixth Form students will find our online Introduction to Post-16 Provision: an online learning platform with unique access to over 20 subject bridging sheets, study skills tips, careers advice and so much more.

## FINANCIAL SUPPORT

We understand that financial barriers can impact on students ability to remain in full-time education. In order for all students to access the full curriculum, we provide a Sixth Form Bursary for those students who demonstrate a genuine need for financial support. The support that is available is provided at many different levels. A number of bursaries and support funds are also allocated throughout the year to those who might need them. Our aim is to remove as many barriers to learning as we possibly can.





I MADE THE RIGHT CHOICE TO STUDY  
AT **BEWDLEY SIXTH FORM**

Now, I'm studying Archaeology at the  
University of Cambridge







[www.bewdley.worcs.sch.uk](http://www.bewdley.worcs.sch.uk)



[www.facebook.com/BewdleySixthForm](https://www.facebook.com/BewdleySixthForm)



[www.twitter.com/BewdleySixth](https://www.twitter.com/BewdleySixth)



<https://www.youtube.com/c/TheBewdleySchools>

## PERSONALISED SUPPORT

---

# **BEWDLEY SIXTH FORM**

We fly with our own wings

01299 403277

Enquiries - [SixthForm@bewdley.worcs.sch.uk](mailto:SixthForm@bewdley.worcs.sch.uk)

Bewdley Sixth Form  
Stourport Road  
Bewdley  
Worcestershire  
DY12 1BL